

Biotinylated Human Claudin 6 VLP

Cat. No. CLD-HM006B



Description

Source	Recombinant Biotinylated Full length Human Claudin 6 VLP is expressed from HEK293.
	It contains Met1-Val220 (It may have cross reaction with anti-His antibody).
Accession	P56747
Molecular Weight	The target protein has a predicted MW of 24.5 kDa.
Endotoxin	Less than 1 EU per µg by the LAL method.
Purity	> 95% as determined by HPLC

Formulation and Storage

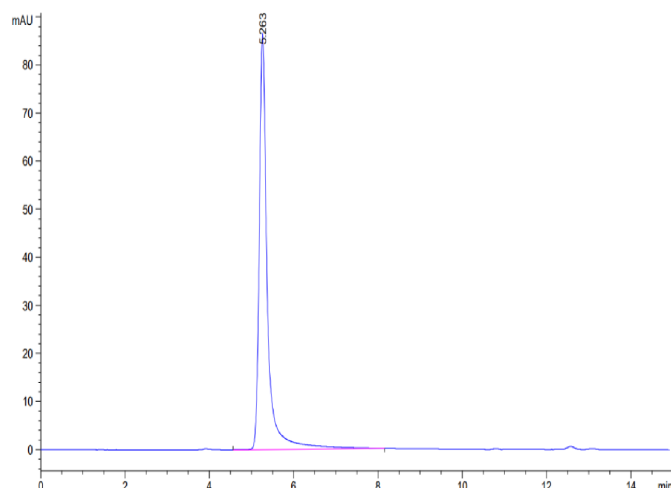
Formulation	Supplied as 0.22µm filtered solution in PBS, 300mM L-arginine (pH 7.4).
Storage	Valid for 6 months from date of receipt when stored at -80°C. Recommend to aliquot the protein into smaller quantities for optimal storage. Please minimize freeze-thaw cycles.

Background

Claudin-6 is a multipass transmembrane protein in the Claudin family. Claudin-6 is expressed by epithelial cells where it participates in tissue development and the maintenance of tight junction integrity. Human Claudin-6 shares 88% and 86% amino acid sequence identity with mouse and rat Claudin-6, respectively.

Assay Data

SEC-HPLC

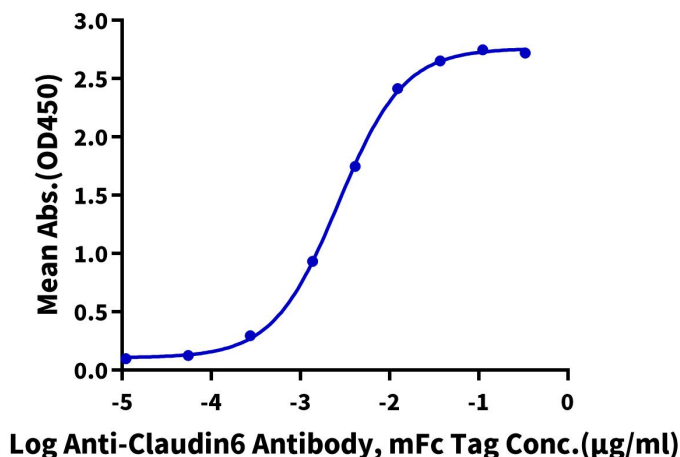


The purity of Biotinylated Human Claudin 6 VLP is greater than 95% as determined by SEC-HPLC.

ELISA Data

Biotinylated Human Claudin 6 VLP ELISA

0.5µg Biotinylated Human Claudin 6 VLP Per Well



Immobilized Biotinylated Human Claudin 6 VLP at 5µg/ml (100µl/well) on the streptavidin precoated plate (5µg/ml). Dose response curve for Anti-Claudin6 Antibody, mFc Tag with the EC50 of 6.5ng/ml determined by ELISA (QC Test).

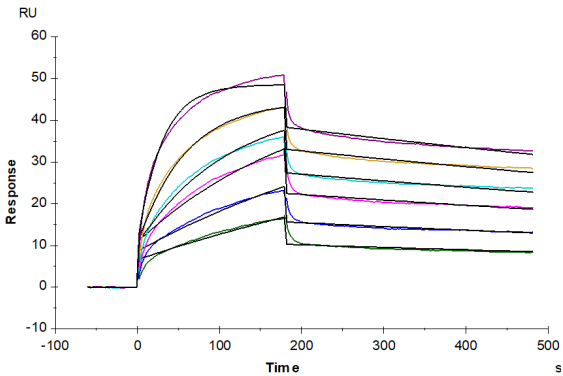
SPR Data

Biotinylated Human Claudin 6 VLP

Cat. No. CLD-HM006B

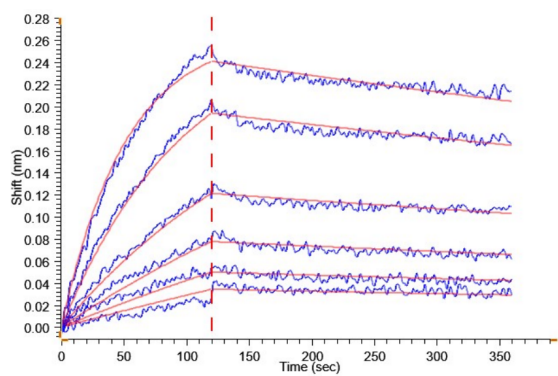


Assay Data



Biotinylated Human Claudin 6 VLP captured on CM5 Chip via streptavidin can bind Anti-Claudin 6 Antibody with an affinity constant of 0.46 nM as determined in SPR assay (Biacore T200).

BLI Data



Loaded Biotinylated Human Claudin 6 VLP on Streptavidin-Biosensor can bind Anti-Claudin 6 Antibody, hFc Tag with an affinity constant of 1.46 nM as determined in BLI assay (Gator® Prime).